



# DAILY BULLION REPORT

16 June 2026

### BULLDEX SNAPSHOT

Commodity	Expiry	Open	High	Low	Close	% Change
MCXBULLDEX	24-Jun-26	0.00	0.00	0.00	35513.00	0.00

### BULLION SNAPSHOT

Commodity	Expiry	Open	High	Low	Close	% Change
GOLD	5-Aug-26	153829.00	153876.00	152632.00	152916.00	1.59
GOLD	5-Oct-26	156791.00	157465.00	156216.00	156615.00	1.74
GOLDMINI	3-Jul-26	151061.00	151787.00	150612.00	150922.00	1.48
GOLDMINI	5-Aug-26	152979.00	153855.00	152689.00	152967.00	1.55
SILVER	3-Jul-26	251563.00	254200.00	251249.00	251458.00	2.14
SILVER	4-Sep-26	257624.00	259930.00	257000.00	257133.00	2.19
SILVERMINI	30-Jun-26	250981.00	257699.00	250981.00	255463.00	-3.58
SILVERMINI	31-Aug-26	264999.00	264999.00	260968.00	261139.00	13.72

### OPEN INTEREST SNAPSHOT

Commodity	Expiry	% Change	% Oi Change	Oi Status
MCXBULLDEX	24-Jun-26	0.00	0.00	Long Liquidation
MCXBULLDEX	29-Jul-26	0.00	0.00	Long Liquidation
GOLD	5-Aug-26	1.59	-1.80	Short Covering
GOLD	5-Oct-26	1.74	14.41	Fresh Buying
GOLDMINI	3-Jul-26	1.48	-1.22	Short Covering
GOLDMINI	5-Aug-26	1.55	0.68	Fresh Buying
SILVER	3-Jul-26	2.14	-1.78	Short Covering
SILVER	4-Sep-26	2.19	9.16	Fresh Buying
SILVERMINI	30-Jun-26	2.11	-3.58	Short Covering
SILVERMINI	31-Aug-26	2.06	13.72	Fresh Buying

### INTERNATIONAL BULLION SNAPSHOT

Commodity	Open	High	Low	Close	% Change
Gold \$	4315.38	4325.53	4306.95	4324.65	0.21
Silver \$	69.92	69.98	69.68	69.81	-0.18

### RATIOS

Ratio	Price	Ratio	Price	Ratio	Price
Gold / Silver Ratio	60.81	Silver / Crudeoil Ratio	33.01	Gold / Copper Ratio	114.05
Gold / Crudeoil Ratio	20.07	Silver / Copper Ratio	187.55	Crudeoil / Copper Ratio	5.68

## Important levels for Jewellery/Bullion Dealers



Booking Price for Sellers	Booking Price for Buyers
153226.00	152606.00
153436.00	152396.00



Booking Price for Sellers	Booking Price for Buyers
252178.00	250738.00
252938.00	249978.00



Booking Price for Sellers	Booking Price for Buyers
94.81	94.45
95.03	94.23

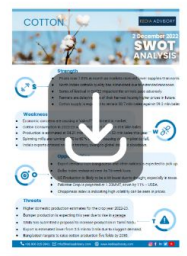
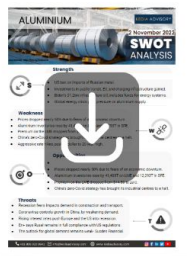


Booking Price for Sellers	Booking Price for Buyers
4337.50	4312.20
4350.40	4299.30



Booking Price for Sellers	Booking Price for Buyers
70.22	69.40
70.53	69.09

Click here for download Kedia Advisory **Special Research Reports**



## Technical Snapshot



**SELL GOLD AUG @ 154000 SL 155000 TGT 152800-151800. MCX**

### Observations

Gold trading range for the day is 151895-154385.

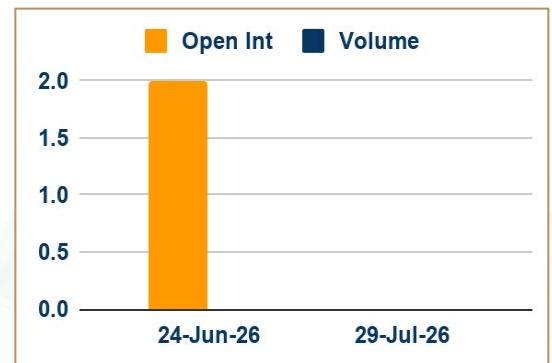
Gold rose after U.S. and Iran officials said they had reached a deal to end their conflict.

U.S. and Iranian officials said they had agreed on a peace framework for a deal to end their war, halt the U.S. blockade of Iran and reopen the Strait of Hormuz.

Gold demand in India improved slightly as softer prices drew in jewellery buyers even as caution prevailed, while premiums in China eased.

ANZ lowers year – end gold price forecast to \$5,200/oz from \$5,600/oz

### OI & Volume



### Spread

GOLD OCT-AUG	3699.00
GOLDMINI AUG-JUL	2045.00

### Trading Levels

Commodity	Expiry	Close	R2	R1	PP	S1	S2
GOLD	5-Aug-26	152916.00	154385.00	153650.00	153140.00	152405.00	151895.00
GOLD	5-Oct-26	156615.00	158015.00	157315.00	156765.00	156065.00	155515.00
GOLDMINI	3-Jul-26	150922.00	152280.00	151600.00	151105.00	150425.00	149930.00
GOLDMINI	5-Aug-26	152967.00	154335.00	153650.00	153170.00	152485.00	152005.00
Gold \$		4324.65	4337.58	4331.05	4319.00	4312.47	4300.42

Technical Snapshot



**SELL SILVER JUL @ 253500 SL 255000 TGT 249500-247500. MCX**

Observations

Silver trading range for the day is 249350-255250.

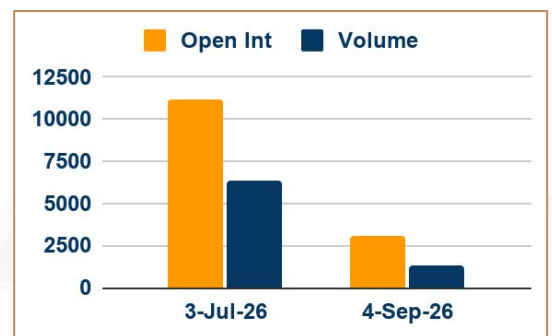
Silver jumped after the US and Iran reached a peace agreement that would reopen the Strait of Hormuz.

Fed will hold its first policy meeting this week under new chair Kevin Warsh and is widely expected to keep interest rates unchanged.

Markets see a 64% chance of a U.S. interest rate hike in December this year after the peace deal, down from 69% last week

Manufacturing output in US was unchanged in May, missing market expectations for a 0.3% rise.

OI & Volume



Spread

SILVER SEP-JUL	5675.00
SILVERMINI AUG-JUN	5676.00

Trading Levels

Commodity	Expiry	Close	R2	R1	PP	S1	S2
SILVER	3-Jul-26	251458.00	255250.00	253350.00	252300.00	250400.00	249350.00
SILVER	4-Sep-26	257133.00	260950.00	259040.00	258020.00	256110.00	255090.00
SILVERMINI	30-Jun-26	255463.00	261435.00	258450.00	254715.00	251730.00	247995.00
SILVERMINI	31-Aug-26	261139.00	266400.00	263770.00	262370.00	259740.00	258340.00
Silver \$		69.81	70.12	69.96	69.82	69.66	69.52



FOLLOW US



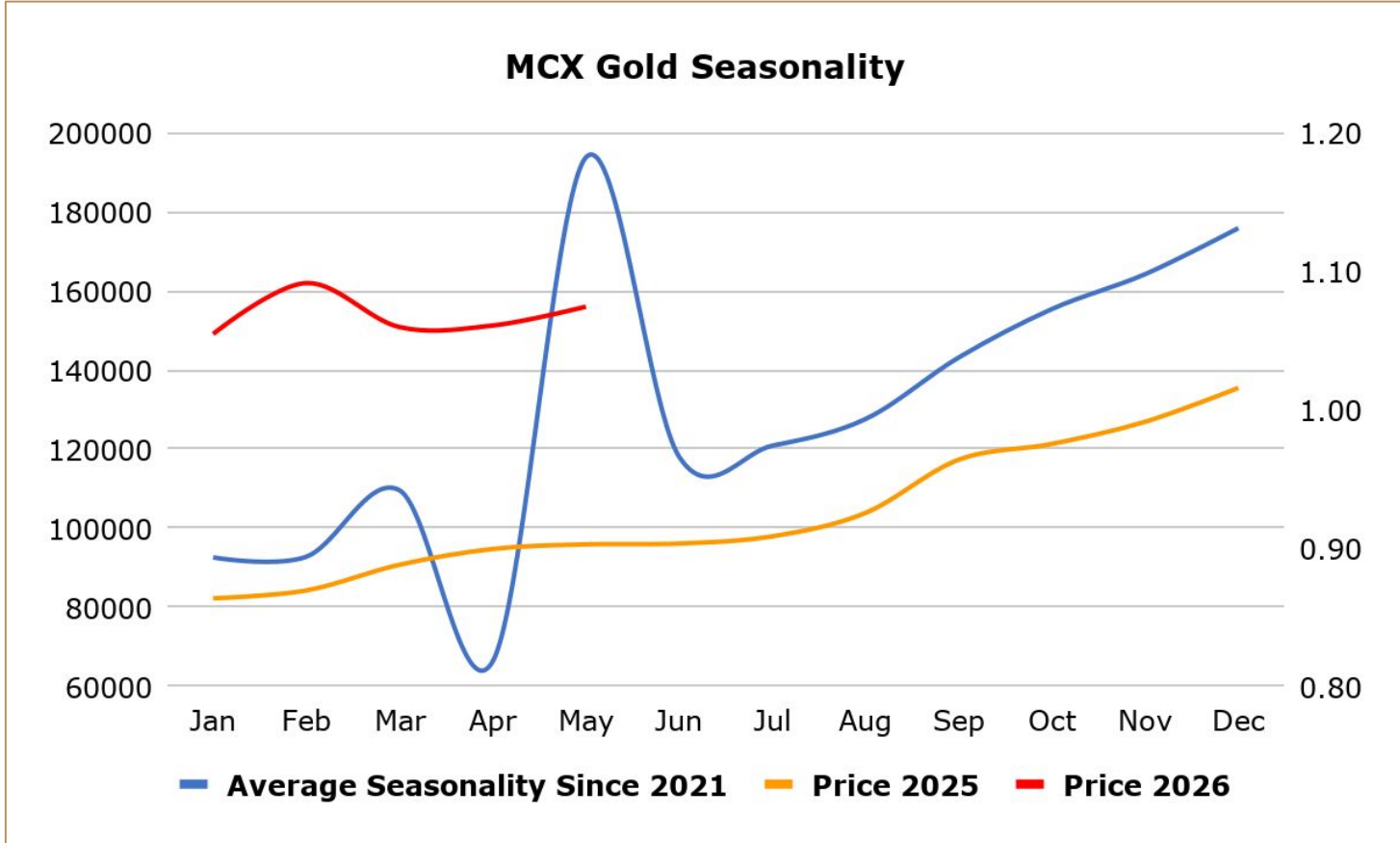
Gold rose after U.S. and Iran officials said they had reached a deal to end their conflict, pushing oil prices lower and easing concerns about inflation and higher interest rates. U.S. and Iranian officials said they had agreed on a peace framework for a deal to end their war, halt the U.S. blockade of Iran and reopen the Strait of Hormuz. The pact will be officially signed on Friday in Switzerland, Pakistani Prime Minister Shehbaz Sharif said in a post on X. The effective closure of the Strait of Hormuz has led to a sharp increase in global oil prices, stoking inflation concerns and raising expectations of interest rates staying higher for longer. Markets see a 64% chance of a U.S. interest rate hike in December this year after the peace deal, down from 69% last week, according to the CME FedWatch tool.

India gold demand ticks up as prices slip; China premiums ease - Gold demand in India improved slightly as softer prices drew in jewellery buyers even as caution prevailed, while premiums in China eased. Dealers quoted discounts of up to \$35 an ounce over official domestic prices, down from last week's discounts of up to \$87. While jewellers have started restocking, purchases remain measured as confidence in retail demand for the coming months is still weak. India's physically backed gold exchange-traded funds logged their first net monthly outflow in a year in May, as investors booked profits following a sharp rise in prices triggered by higher import duties. In top consumer China, bullion traded at premiums of \$1 to \$5 an ounce over the global benchmark price, down from \$7 to \$10 premiums last week. In Hong Kong, gold traded between par and a \$1.90 premium, while in Japan, it was sold at a discount of \$0.50. In Singapore, gold was sold between a \$0.50 discount and a \$2 premium.

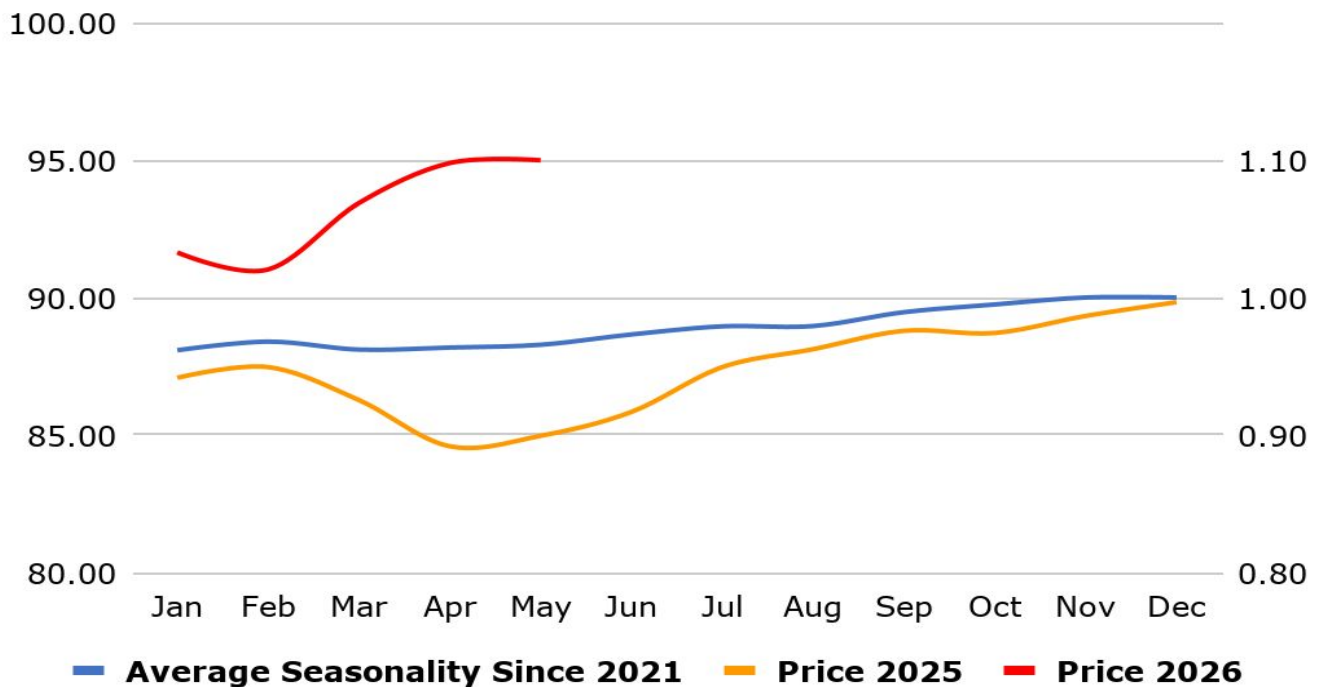
Swiss gold exports drop 20% in April as deliveries to UK fall - Gold exports from Switzerland in April fell 20% from the previous month as shipments to Britain and China slowed, offsetting higher deliveries to India and Hong Kong, Swiss customs data showed. The world's biggest bullion refining and transit hub's deliveries to the UK fell to 35.5 metric tons from 57.6 tons in March. Britain is home to the world's largest over-the-counter gold trading hub. Supplies to China, a major bullion consumer, eased by 19% to 30.5 tons while shipments to India climbed to 6.5 tons from 3.5 tons in March.

China's April net gold imports via Hong Kong rise 81.2% from March - China's net gold imports via Hong Kong rose 81.2% in April from the previous month, Hong Kong Census and Statistics Department data showed. The world's top gold consumer imported a net 86.715 metric tons in April, up from 47.866 tons in March, and marked its 13th straight monthly increase, the data showed. The Hong Kong data may not provide a complete picture of Chinese purchases because gold is also imported via Shanghai and Beijing. China's bullion buying patterns can influence global trends and markets. China's total gold imports via Hong Kong stood at 99.327 tons in April, up around 24.8% from March's 79.576 tons. Earlier this month, data from the People's Bank of China showed the central bank loaded up on gold for an 18th straight month in April. The country's gold reserves have added up to 74.64 million fine troy ounces by the end of April, versus the previous month's 74.38 million.

India raises gold and silver tariffs to 15% to curb imports, support rupee - India has raised import tariffs on gold and silver to 15% from 6%, government orders said, as part of efforts to curb overseas purchases of the metals and ease pressure on the country's foreign exchange reserves. The higher duties could dampen demand in the world's second-largest consumer of precious metals, although they may help narrow India's trade deficit and support the rupee, one of Asia's worst-performing currencies. However, industry officials warned higher import taxes could revive smuggling, which had eased after India cut tariffs in mid-2024. The government has imposed a 10% basic customs duty and a 5% Agriculture Infrastructure and Development Cess (AIDC) on gold and silver imports, taking the effective import tax to 15% from 6%. Inflows into India's gold exchange-traded funds (ETFs) surged 186% year-on-year in the March quarter to a record 20 metric tons, the World Gold Council said last month.



### USDINR Seasonality



### Weekly Economic Data

Date	Curr.	Data
Jun 15	EUR	Italian Trade Balance
Jun 15	EUR	Industrial Production m/m
Jun 15	EUR	Trade Balance
Jun 15	USD	Empire State Manufacturing Index
Jun 15	USD	Capacity Utilization Rate
Jun 15	USD	Industrial Production m/m
Jun 15	USD	NAHB Housing Market Index
Jun 16	EUR	ZEW Economic Sentiment
Jun 16	EUR	German ZEW Economic Sentiment
Jun 16	USD	ADP Weekly Employment
Jun 16	USD	Building Permits
Jun 16	USD	Housing Starts
Jun 16	USD	Import Prices m/m

Date	Curr.	Data
Jun 17	USD	Core Retail Sales m/m
Jun 17	USD	Retail Sales m/m
Jun 17	USD	Business Inventories m/m
Jun 17	USD	Pending Home Sales m/m
Jun 17	USD	Crude Oil Inventories
Jun 17	USD	Federal Funds Rate
Jun 18	EUR	Current Account
Jun 18	EUR	Italian Qrtly Unemployment Rate
Jun 18	EUR	German Buba Monthly Report
Jun 18	USD	Philly Fed Manufacturing Index
Jun 18	USD	Unemployment Claims
Jun 18	USD	CB Leading Index m/m
Jun 18	USD	Natural Gas Storage

# Stay Ahead in Markets with Kedia Advisory



Get Live Commodity & Equity Market Updates backed by in-depth research, data-driven insights, and expert analysis.



## Why Kedia Advisory

- Real-time market updates
- Key levels & trend direction
- Research-based market views
- Trusted by active traders & investors

Visit: Kedia Advisory Website

[www.kediaadvisory.com](http://www.kediaadvisory.com)

CLICK HERE



SCAN ME



**Kedia Stocks and Commodities Research Pvt Ltd**

SEBI REGISTRATION NUMBER : INH000006156

Aadinath Commercial, Opp. Mumbai University, Vasant Valley Road, Khadakpada, Kalyan West

Investment in securities market are subject to market risks, read all the Related documents carefully before investing.



**Scan the QR to  
connect with us**



**KEDIA ADVISORY**

## **KEDIA STOCKS & COMMODITIES RESEARCH PVT LTD.**

Mumbai. INDIA.

For more details, please contact Mobile: +91 9619551022

Email: [info@kediaadvisory.com](mailto:info@kediaadvisory.com)

SEBI REGISTRATION NUMBER - INH000006156

For more information or to subscribe for monthly updates

Visit [www.kediaadvisory.com](http://www.kediaadvisory.com)

This Report is prepared and distributed by Kedia Stocks & Commodities Research Pvt Ltd. for information purposes only. The recommendations, if any, made herein are expressions of views and/or opinions and should not be deemed or construed to be neither advice for the purpose of purchase or sale through KSCRPL nor any solicitation or offering of any investment /trading opportunity. These information/opinions/ views are not meant to serve as a professional investment guide for the readers. No action is solicited based upon the information provided herein. Recipients of this Report should rely on information/data arising out of their own investigations. Readers are advised to seek independent professional advice and arrive at an informed trading/investment decision before executing any trades or making any investments. This Report has been prepared on the basis of publicly available information, internally developed data and other sources believed by KSCRPL to be reliable. KSCRPL or its directors, employees, affiliates or representatives do not assume any responsibility for or warrant the accuracy, completeness, adequacy and reliability of such information/opinions/ views. While due care has been taken to ensure that the disclosures and opinions given are fair and reasonable, none of the directors, employees, affiliates or representatives of KSCRPL shall be liable for any direct, indirect, special, incidental, consequential, punitive or exemplary damages, including lost profits arising in any way whatsoever from the information/opinions/views contained in this Report. The possession, circulation and/or distribution of this Report may be restricted or regulated in certain jurisdictions by appropriate laws. No action has been or will be taken by KSCRPL in any jurisdiction (other than India), where any action for such purpose (s) is required. Accordingly, this Report shall not be possessed, circulated and/ or distributed in any such country or jurisdiction unless such action is in compliance with all applicable laws and regulations of such country or jurisdiction. KSCRPL requires such a recipient to inform himself about and to observe any restrictions at his own expense, without any liability to KSCRPL. Any dispute arising out of this Report shall be subject to the exclusive jurisdiction of the Courts in India.